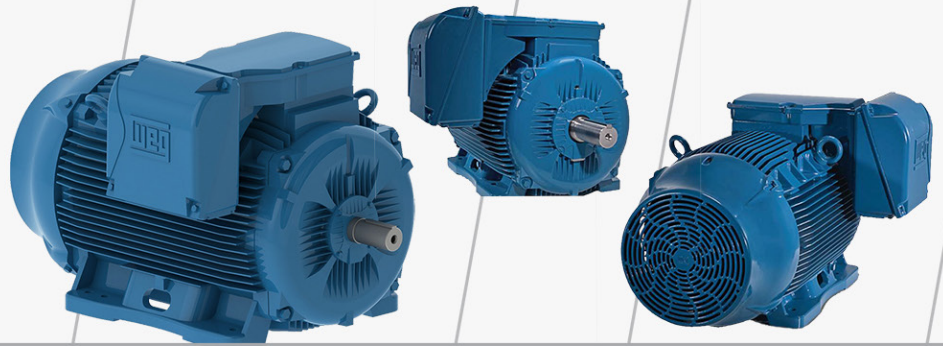




## W22 MOTORS

**MUCH MORE THAN YOUR  
TYPICAL CAST IRON MOTOR**



The W22 range of three-phase induction motors by WEG is engineered to deliver significantly lower energy consumption, along with reduced noise and vibration. These motors provide higher reliability, easier maintenance, and a lower total cost of ownership. Each kilowatt hour saved in a production activity can be redirected to the

production of other goods and services, turning energy savings into additional resources for investment in innovation and productivity gains. By cutting energy usage and maintenance costs, WEG's W22 motors ensure excellent cost-effectiveness, increased productivity, and lower operational costs for the industry.

### Advantages:



#### Optimal Warranty:

- **3-Year Warranty:** Available when you combine a WEG W22 motor with a WEG Drive or Soft Starter.
- **Activation:** Simply register the serial numbers of both the motor and the drive with WEG's warranty department.
- **Coverage:** Includes Low Voltage drives, soft starters, and motors up to 600 HP (701A).
- **Benefits:** Provides comprehensive protection and peace of mind for your investment.



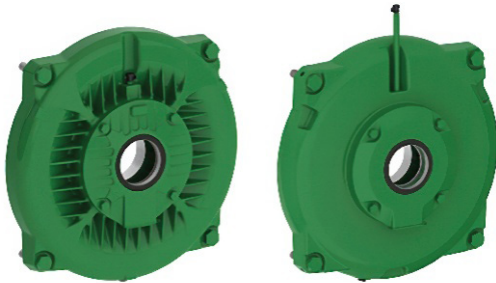
#### Vent System:

- **Noise Reduction & Air Flow:** Designed to reduce noise levels and improve air flow distribution over the motor, minimizing hot spots and enhancing reliability and useful life.
- **Fan Cover:**
  - Made of cast iron for larger models.
  - Heavy gauge stamped steel for IEEE 841-compliant models.
  - Offers superior impact resistance.
- **Terminal Box & Eyebolts:** Strategically positioned to reduce air flow dispersion.
- **Bearing Temperature:** Lower operating temperatures extend lubrication intervals and increase motor longevity.



## Frame Design:

- **Minimized Air Flow Dispersion:** Enhances heat exchange between the motor and the environment.
- **Hot Spot Reduction:** Reduces hot spots on the frame surface, extending bearing lubrication intervals.
- **Performance & Longevity:** Contributes to improved motor performance and increased longevity.
- **Efficient Cooling:** The optimized frame structure ensures more efficient cooling.
- **Consistent Operation:** Helps maintain consistent motor operation under demanding conditions.



## Endshields

- **Enhanced Cooling:** Designed to improve cooling and lower the operating temperatures of the bearings, extending lubrication intervals.
- **D-Endshield:**
  - Bearing hub positioned outward to enhance cooling.
  - Reduces operating temperature and increases heat dissipation.
  - Robust structure minimizes vibration.
- **ND-Endshield:**
  - Optimized for air flow to contribute to noise reduction.
  - Durable design further minimizes vibration.



## Terminal Box

- **Increased Internal Space:** Simplifies access to the terminals, ensuring easy and safe electrical connections during installation and maintenance.
- **Connection System:**
  - Allows for easy modification of motor mounting on larger frames (IEC 225 / NEMA 447T and above).
  - Reduces the time required for adjustments.
  - Lowers the number of motors needed in stock.

For more info about **WEG W22 Motors** call **1-800-STEINER** (783-4637) to speak with a Steiner Industrial Application Specialist.



**STEINER**  
steinerelectric.com



# STEINER

**Steiner Electric – Who we are** Steiner is a full-line electrical and metalworking distributor that serves the commercial construction, industrial and OEM markets in the greater Chicago area. We pride ourselves on having in-house experts and access to our vendor’s experts to help with innovation, process improvement and machine performance.

We have developed extensive digital tools that help our customers to easily connect with our personnel and products in order to get information and deliveries quickly and easily. Our customer portal is designed to help get answers and tasks completed quickly. We believe that our digital experience is just as important as interacting with us in-person. Our delivery solutions are focused on improving a customer’s efficiency when receiving material. We have solutions that deliver at specific times or provide material based on the needs of the project.

## **Commercial Construction**

Servicing the electrical contractors and building maintenance personnel.



## **Industrial End User**

Servicing steel mills, metal shaping and forming, manufacturing plants, food processing, industrial and commercial warehousing, data-centers.



## **OEM**

Helping machine builders innovate and automate packaging, material handling, manufacturing and assembly.



### The Power of Expertise

Access local and global product and application experts to innovate and improve business outcomes.



### The Power To Connect

Access information on products, order status, sales personnel and more in an instant to meet the speed of business.



### The Power to Deliver

Your material and solutions provided in a way that improves your efficiency.