

FEATURES & BENEFITS

ETERNAL™ Series

Our enhanced SystemOne ETERNAL Series products provide customizable solutions for demanding, power, data and audio/video today and tomorrow with unique capabilities.

ETERNAL Series concrete floorboxes with 3 inches and larger box depths can be field installed with PVC and metallic hubs for feed-thru wiring. The enhanced design also expands device capacity and improves installation efficiency. These floorboxes will prove to be indispensable assets to your building's delivery system infrastructure.



Box

- 3.75" deep wiring device chambers
- 14 gauge galvanized sheet metal and PVC and cast iron
- Optional fusion-bonded, green epoxy paint for on-grade use
- 3" and deeper sheet metal versions accept field installed metallic 2" threaded hubs
- Patented PVC conduit adapters can be used on metal and PVC floorboxes—CFBHUB200PVC (2" feed-thru) and CFBHUB125PVC (1-1/4" feed-thru)
- Pre-pour and post-pour adjustment
- Patented, labor saving, easy mount device plates

Cover

- Available in round and rectangular, recessed and furniture feed styles
- Recessed covers open a full 180°
- Large hide-away cable egress doors
- Listed to UL 514A and UL Scrubwater compliant
- Die cast aluminum cover construction
- All covers are ADA compliant

Recessed 4-gang floorboxes



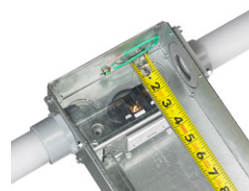
Concrete Pour Pocket Cap

Recessed concrete floorboxes include (1) yellow factory-installed, field-removable pour pocket cap. Provides a pocket in the final floor to accept covers intended for terrazzo, tile, or finished concrete floors. Not for use with carpet, wood or engineered floors.



Deep Wiring Chambers

3.75" deep wiring chambers to accommodate larger USB receptacles, AV modules and feed-thru wiring.



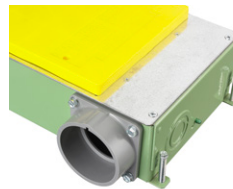
Rectangular Cover Extension Caps

Pre-pour extension caps allow the floorbox to be installed with 1" of concrete above the box. Maximum of two yellow caps can be installed on each box. Additional pre-pour caps purchased in packs of two.



2" Conduit Ready

Readily accepts 2" conduits with the use of a 2" PVC or threaded conduit hub to meet expanding AV and data needs. The offset design allows for less conduit lifting while threading and the hub mounting holes are asymmetrical for installation efficiencies.



Round Cover Stackable Rings

Pre-pour round stackable rings increase box height and concrete pour depth by 3/4" increments.



CR Version

Intended for on-grade use, coated with fusion-bonded epoxy paint to help prevent corrosion



FEATURES & BENEFITS

ETERNAL™ Series

Functionality

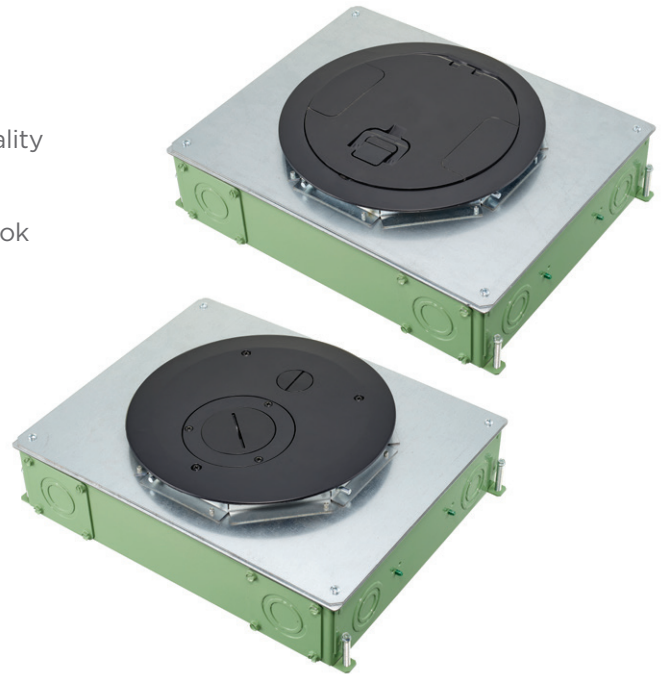
- Cables and connections are protected by recessed functionality
- Open architecture sub-plate design
- Common door layout regardless of flange for harmonized look
- Meets UL 514A scrubwater requirements with ScrubShield® technology
- All SystemOne covers are ADA compliant
- Cables and plugs are protected by recessed connections

Value

- Easy selection with common look for all floor types
- Enhance building décor with numerous finishes
- Increase durability and longevity with cast aluminum covers

Online Resources

- BIM models, customer drawings and technical specifications are available at hubbell.com/wiringdevice-kellems



Recessed 4-gang floorboxes with recessed and furniture feed covers



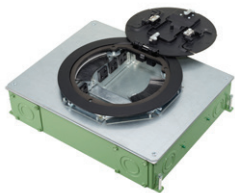
Safety

- Flush flange available for tile, finished concrete or Terrazzo
- Surface flange available for carpeted floors with 0.15" rise meets ADA requirements
- Hideaway egress doors fold under cover while in use



Family Look

SystemOne recessed floorbox line offers a common look regardless of capacity or installation, ensuring a consistent look throughout a building with rectangular or round covers. Round covers lend themselves to multi-story buildings also using fire-rated poke-through devices.



Service Access

- All covers have 180° opening of main door
- Larger cover openings allows for easier device installation and end user access
- Larger access area makes for effortless device engagement

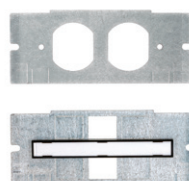


Recessed and Furniture Feed Covers

2, 4, 6 and 10-gang recessed floorbox lines offer dynamic installation flexibility. Each box series has rectangular and round cover options with recessed and furniture feed cover capabilities.

Pre-Wired Mounting Plates

- Pre-wired duplex, StyleLine® and 3-Cube receptacles with 8" stranded leads are installed into plates to allow for even more labor savings
- Pre-wired plates include tamper resistant, controlled and isolated ground receptacles



Single Screw Device Mounting Plates

2, 4 and 6-gang boxes offer line voltage and low voltage device voltage with a patented single screw installation which maximizes installation efficiency by reducing install time