



## Hand Crank Lift System

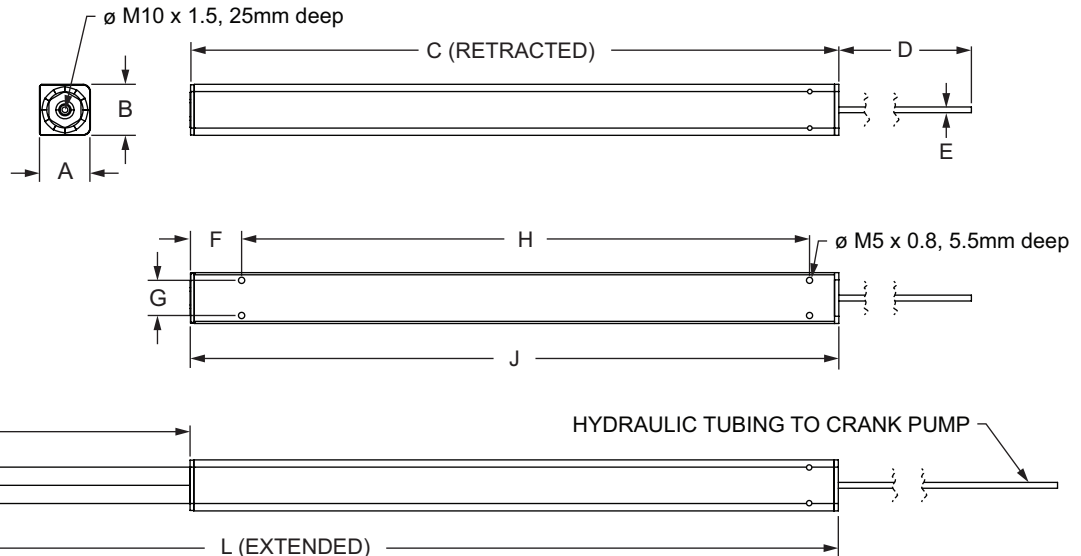
- Included in kit: hydraulic pump with hand crank (1), linear leg units (4), rubber leveling feet (4), mounting brackets (8), M5 x 8mm bolts (16)
- Kit ships in one box weighing 29 lbs and measuring 35" x 12" x 9" in size



See the lift system in action. Scan the QR code to see a demonstration

### Material Specifications

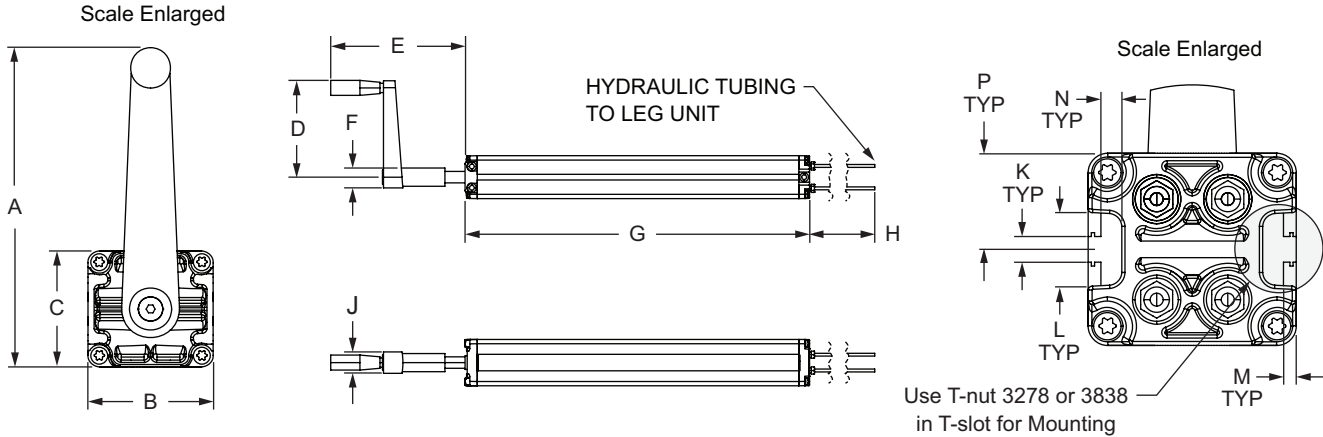
- Works with 15, 30, 40, 45 series profiles
- Made up of primarily aluminum, plastic and stainless steel
- Max load: 450 kg (992 lbs) – includes weight of frame
- Max stroke: 300mm (11.811")
- Lifting speed: 5mm (.197") per hand crank turn
- Retracted height of legs: 445mm (17.520")
- Extended height of legs: 745mm (29.331")



### Linear Leg Unit

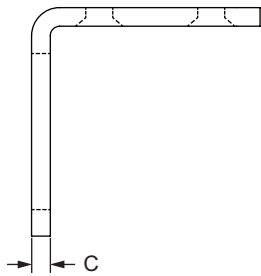
Part No.	Series	Material	Color	A	B	C	D	E	F	G	H	J	K	L
2371	15 30 40 45	Aluminum & Steel	Gray	1.347" (34.21mm)	1.378" (35.00mm)	17.521" (445.03mm)	118.000" (2997.20mm)	.157" (4.00mm)	1.379" (35.03mm)	.945" (24.00mm)	15.354" (389.99mm)	17.521" (445.03mm)	11.822" (300.28mm)	29.343" (745.31mm)

Effective Date: 10-25-2022



## Hydraulic Pump with Hand Crank

Part No.	Material	Color	A	B	C	D	E	F		
2371	Aluminum & Plastic	Gray	6.509" (165.33mm)	2.559" (64.99mm)	2.355" (59.82mm)	5.335" (722.94mm)	7.411" (188.24mm)	1.093" (27.76mm)		
			G	H	J	K	L	M	N	P
			18.996" (465.40mm)	118.142" (3000.81mm)	1.181" (29.99mm)	.315" (8.00mm)	.904" (22.96mm)	.157" (3.99mm)	.256" (6.50mm)	1.178" (29.91mm)

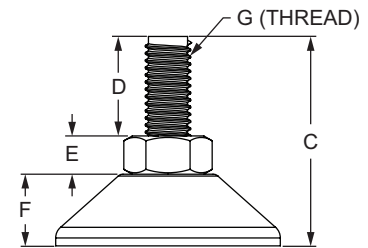
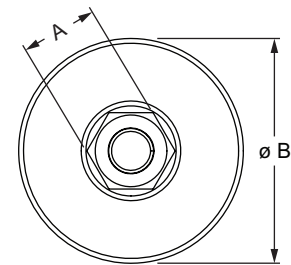
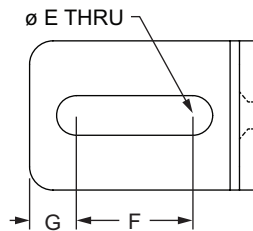
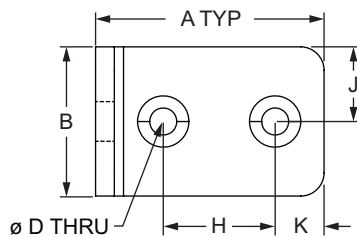


### Included Hardware

Bolt	Qty.
M5 x 8mm FHSCS	16

### Suggested Hardware (Mount to T-Slot)

Series	Bolt	Qty.	Washer	Qty.	T-Nut	Qty.
30	11-8312	8	11-6042	8	13094	8
15 40	11-8316	8	11-6042	8	3838	8
45	11-8316	8	11-6042	8	13062	8



## Mounting Bracket

Part No.	Material	Color	A	B	C	D	E
2371	Steel	Gray	1.929" (48.99mm)	1.260" (32.00mm)	.157" (3.99mm)	.228" (5.80mm)	.335" (8.50mm)
			F	G	H	J	K
			.984" (24.99mm)	.394" (10.00mm)	.945" (24.00mm)	.630" (16.00mm)	.413" (10.50mm)

## Rubber Leveling Feet

Part No.	A	B	C
2371	.630" (16.00mm)	1.850" (46.99mm)	1.725" (43.82mm)
D	E	F	G
.819" (20.80mm)	.315" (8.00mm)	.591" (15.01mm)	M10 x 28mm

Effective Date: 10-25-2022